



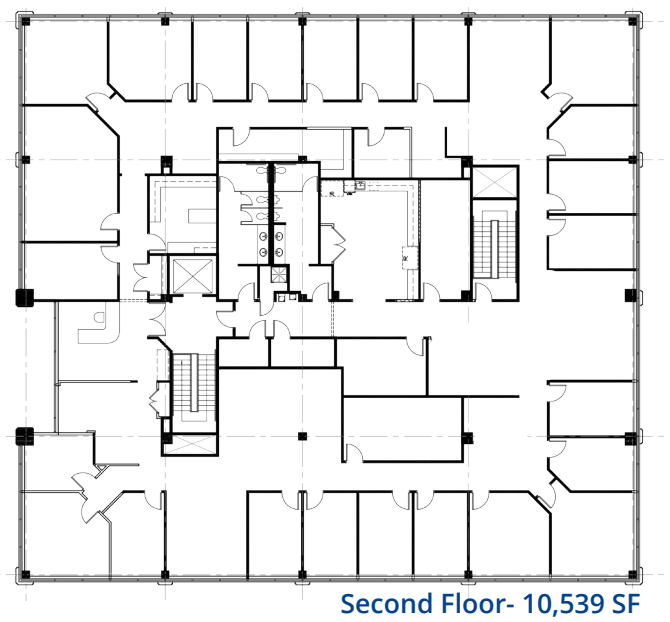
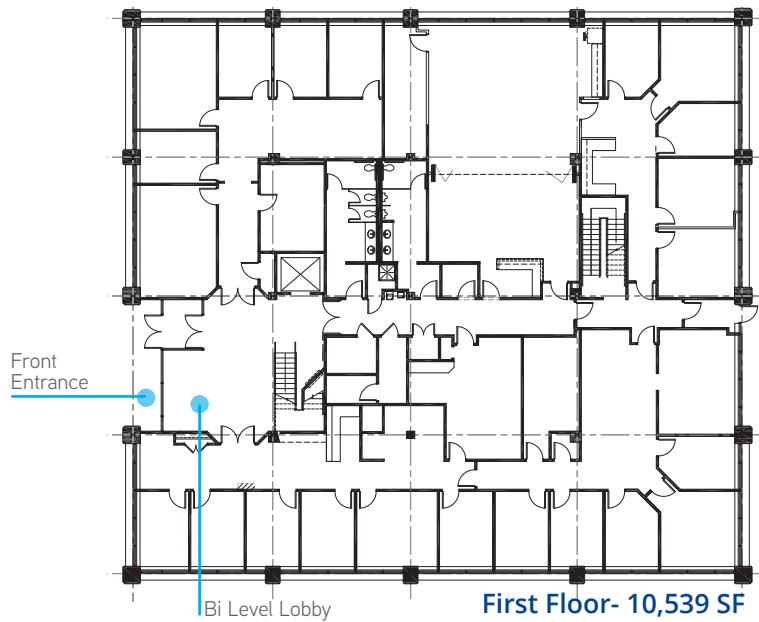
1100 Northbrook Dr | Trevose, PA

For Lease > 21,000+/- SF Office Building

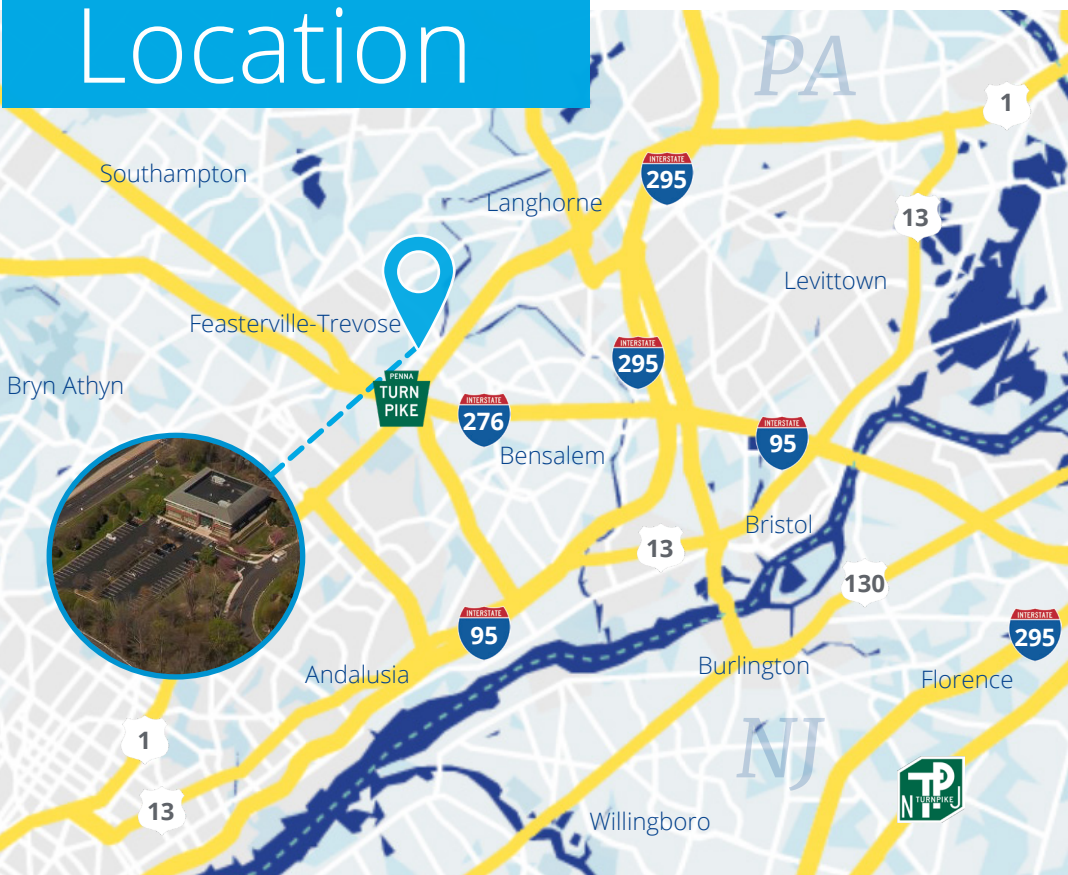
- Available for immediate occupancy
- Major branding opportunity off a high-profile intersection
- Favorable local business taxes in Bensalem Township
- Immediate access to Exit 351 (Bensalem/Rt 1) of the PA Turnpike
- Easy access to public transit including SEPTA Bus Routes 58 and 14, and SEPTA Neshaminy Falls Regional Rail Station
- Abundant parking available, 5.14/1,000 SF



Floor Plans



Location



Neighboring Retailers



NESHAMINY MALL

Matthew Shanahan

Senior Managing Director
+1 215 928 7560
matthew.shanahan@colliers.com

Ina Sargen

Senior Vice President
+1 610 557 0182
ina.sargen@colliers.com

This document has been prepared by Colliers International for advertising and general information only. Colliers International makes no guarantees, representations or warranties of any kind, expressed or implied, regarding the information including, but not limited to, warranties of content, accuracy and reliability. Any interested party should undertake their own inquiries as to the accuracy of the information. Colliers International excludes unequivocally all inferred or implied terms, conditions and warranties arising out of this document and excludes all liability for loss and damages arising there from. This publication is the copyrighted property of Colliers International and/or its licensor(s). ©2020. All rights reserved.



Accelerating success.