

The Village at Swift Creek

5001-5161 Craig Rath Boulevard
Midlothian, Virginia 23112

Monument Signage Available



The Village at Swift Creek

5001-5161 Craig Rath Boulevard | Midlothian, Virginia 23112

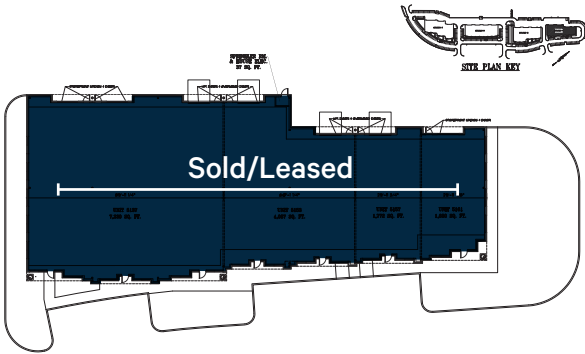


Property Features

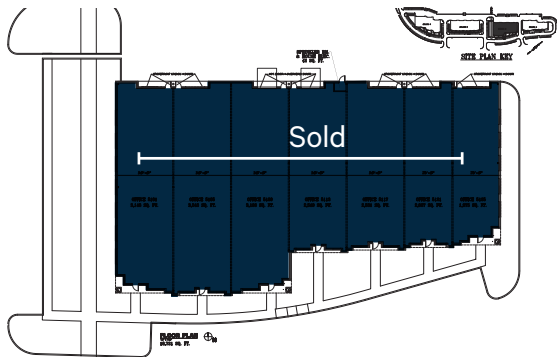
- + Owner offering aggressive sale and lease terms
- + Four contemporary one-story office buildings
- + 2,525-3,161 SF available for lease
- + Zoned C-3
- + Standard finishes
- + Monument signage available
- + Located in high-growth corridor
- + Ample parking suitable for medical and office users



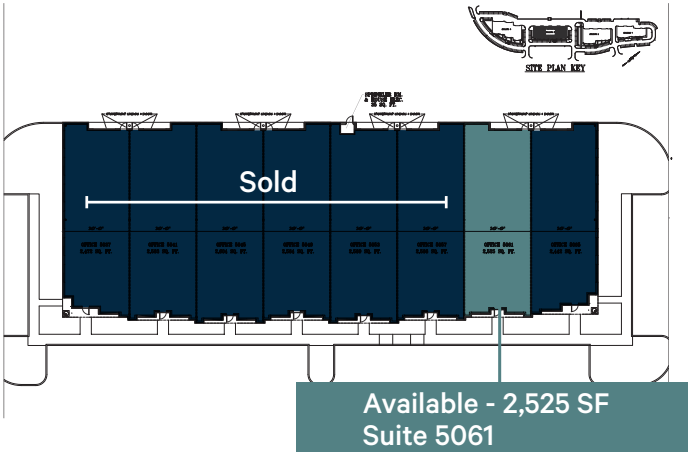
Building 1



Building 2



Building 3



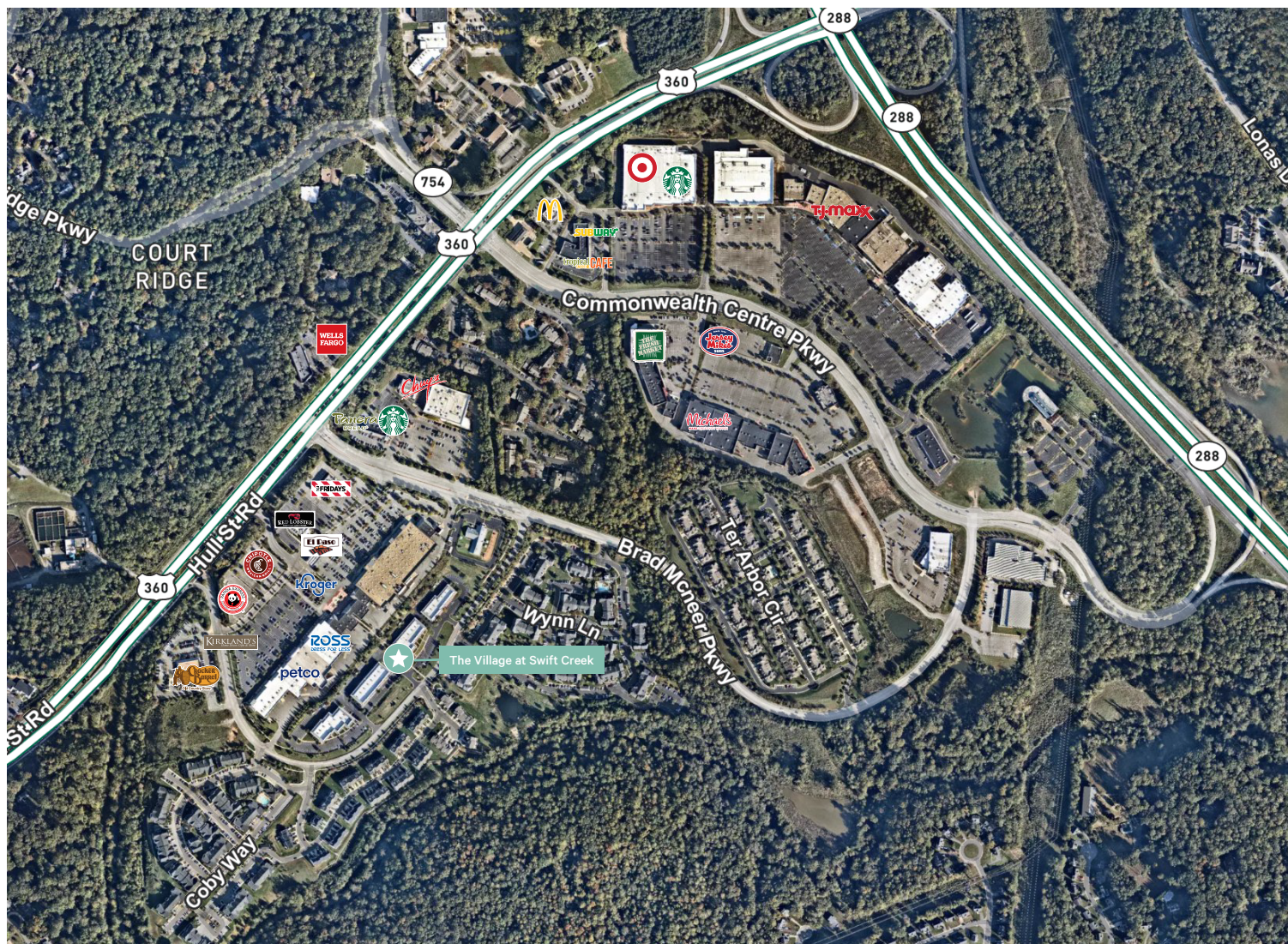
Building 4



The Village at Swift Creek

5001-5161 Craig Rath Boulevard | Midlothian, Virginia 23112

For Sale/Lease



Contact Us

Chris Wallace

Senior Vice President

+1 804 401 4001

chris.wallace@cbre.com

Eric Williford

Vice President

+1 804 401 4003

eric.williford@cbre.com

© 2021 CBRE, Inc. All rights reserved. This information has been obtained from sources believed reliable, but has not been verified for accuracy or completeness. You should conduct a careful, independent investigation of the property and verify all information. Any reliance on this information is solely at your own risk. CBRE and the CBRE logo are service marks of CBRE, Inc. All other marks displayed on this document are the property of their respective owners, and the use of such logos does not imply any affiliation with or endorsement of CBRE. Photos herein are the property of their respective owners. Use of these images without the express written consent of the owner is prohibited.