



Proposed Exterior Update

Office Building for Lease or Sale



Proposed Lobby Update

For More Information,
Please Contact:

John Susanin

Senior Managing Director
+1 610 684 1860
john.susanin@colliers.com

Kyle Hilbert

Vice President
+1 610 615 1836
kyle.hilbert@colliers.com

The Commons at Renaissance

2004 Renaissance Blvd, King of Prussia, PA

- 28,490 SF on two levels; will open building for 7,000 SF user
- Ideal for mid-sized user occupiers
- Well sited property offers pleasant tree-top views
- Abundant parking available
- Park setting with landscaped jogging trails, picnic areas and beautiful pond
- Amenities abound - Conshohocken is three minutes drive
- Strong ownership, professional on-site management
- Served by SEPTA Bus Route 95

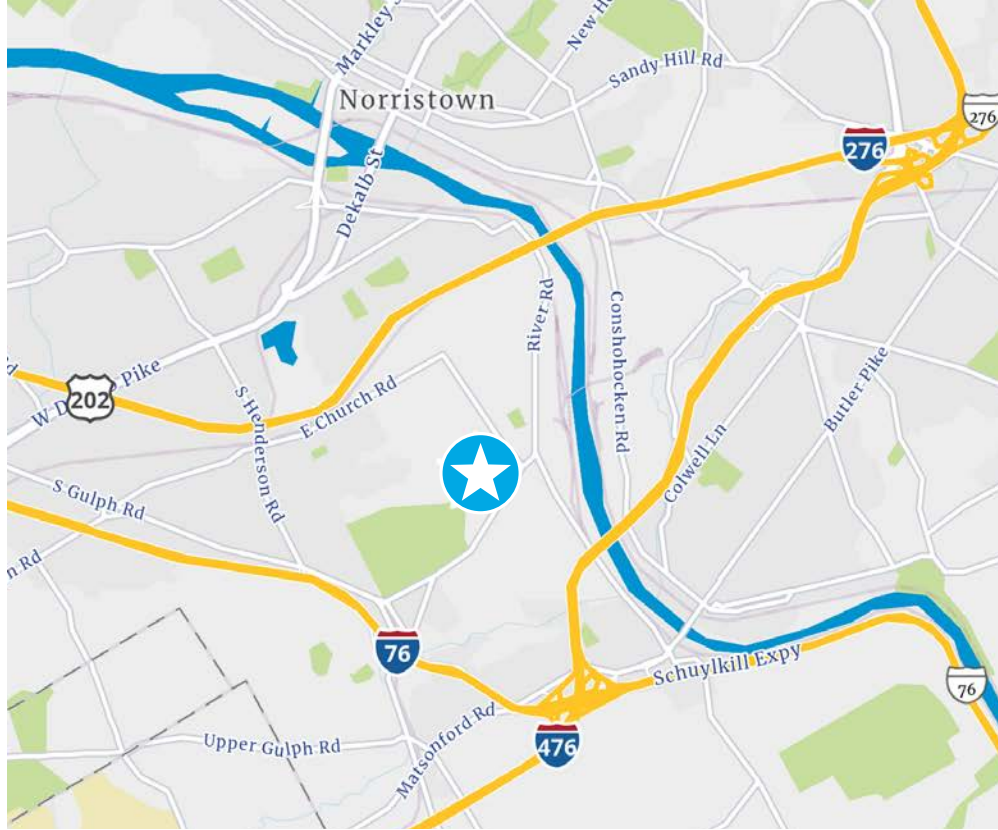
Colliers

161 Washington Street, Suite 1090
Conshohocken, PA 19428
www.colliers.com/philadelphia

Copyright © 2021 Colliers International. Information herein has been obtained from sources deemed reliable, however its accuracy cannot be guaranteed. The user is required to conduct their own due diligence and verification.

Location

- Situated just off Route 320, two minutes from the Gulph Mills Interchange of I-76
- Only minutes from I-476, Route 23 and the Valley Forge entrance to the PA Turnpike
- Within 5 minutes of Radnor, Conshohocken, and Route 202 Corridor
- 25 minutes west of Center City Philadelphia and the Philadelphia International Airport

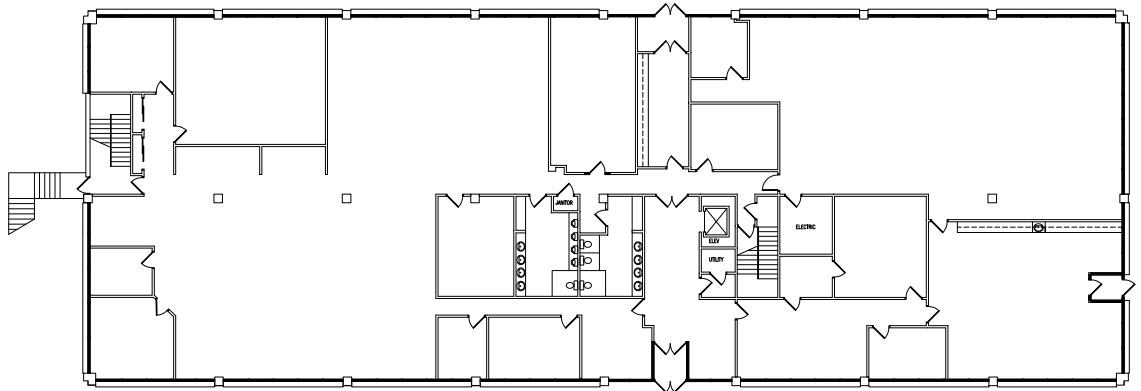


Floor Plans

(Existing conditions shown. Either 1st or 2nd floors can be divided.)

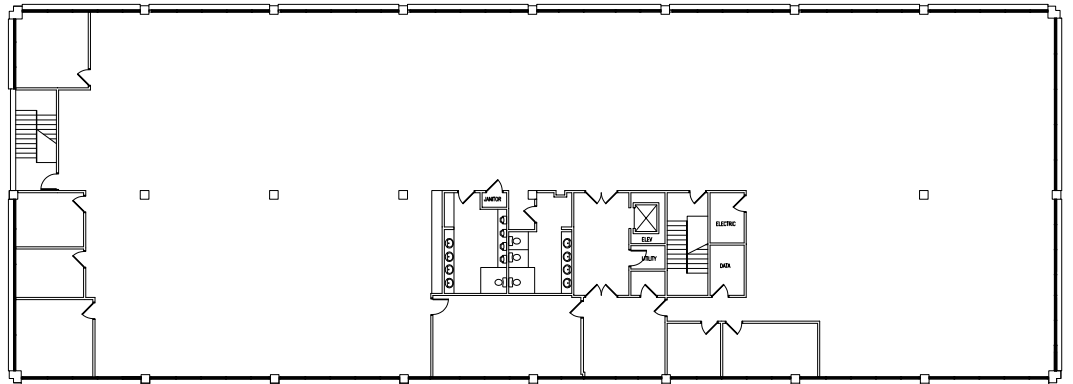
First Floor

14,425 SF



Second Floor

14,425 SF



John Susanin

Senior Managing Director
+1 610 684 1860
john.susanin@colliers.com

Kyle Hilbert

Vice President
+1 610 615 1836
kyle.hilbert@colliers.com

Colliers

161 Washington Street, Suite 1090
Conshohocken, PA 19428
www.colliers.com/philadelphia

