



Move-in Ready Space Available Now

For More Information,
Please Contact:

John Susanin

Senior Managing Director
+1 610 684 1860
john.susanin@colliers.com

Kyle Hilbert

Vice President
+1 610 615 1836
kyle.hilbert@colliers.com

Colliers

161 Washington Street, Suite 1090
Conshohocken, PA 19428
www.colliers.com/philadelphia

The Commons at Renaissance

2009 Renaissance Blvd, King of Prussia, PA

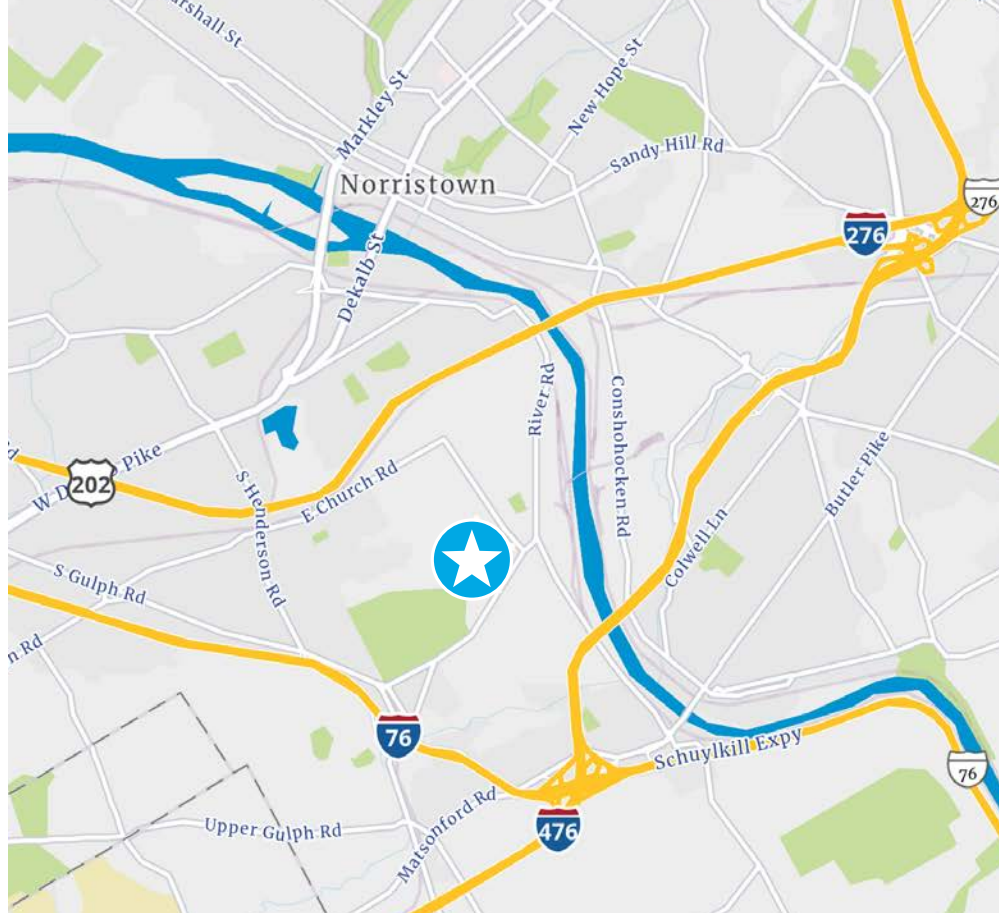
3,660 SF Small Suite Available with Existing Conditions

- Convenient direct access to suite from parking area
- Well sited property is ideal for small companies
- Park setting with landscaped jogging trails, picnic areas and beautiful pond
- Best in/out access in entire business park, first right from the main entrance
- Amenities abound - childcare, hotels, retail, and restaurants with minutes of site
- Served by SEPTA Bus Route 95
- Strong ownership, professional on-site management

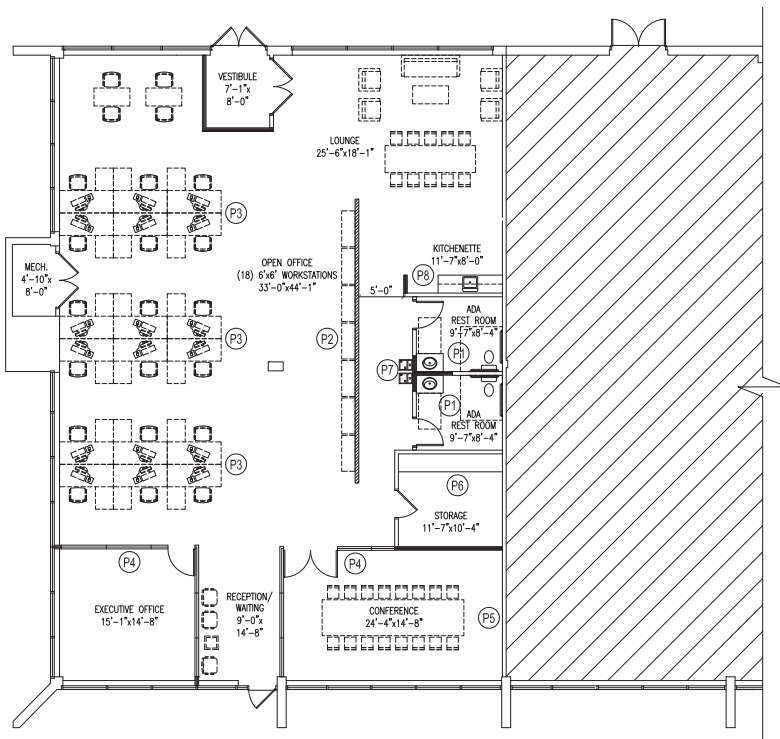
Copyright © 2021 Colliers International. Information herein has been obtained from sources deemed reliable, however its accuracy cannot be guaranteed. The user is required to conduct their own due diligence and verification.

Location

- Situated just off Route 320, two minutes from the Gulph Mills Interchange of I-76
- Only minutes from I-476, Route 23 and the Valley Forge entrance to the PA Turnpike
- Within 5 minutes of Radnor, Conshohocken, and Route 202 Corridor
- 25 minutes west of Center City Philadelphia and the Philadelphia International Airport



Floor Plan



Space Highlights

- Light-filled end cap space with dramatic floor to ceiling glass conference and office
- Efficient layout
- Kitchen/hospitality bar
- Private restrooms

John Susanin

Senior Managing Director
+1 610 684 1860
john.susanin@colliers.com

Kyle Hilbert

Vice President
+1 610 615 1836
kyle.hilbert@colliers.com

Colliers

161 Washington Street, Suite 1090
Conshohocken, PA 19428
www.colliers.com/philadelphia

