



9,804 SF Space  
Available Now

For More Information,  
Please Contact:

**John Susanin**

Senior Managing Director  
+1 610 684 1860  
[john.susanin@colliers.com](mailto:john.susanin@colliers.com)

**Kyle Hilbert**

Vice President  
+1 610 615 1836  
[kyle.hilbert@colliers.com](mailto:kyle.hilbert@colliers.com)

**Colliers**

161 Washington Street, Suite 1090  
Conshohocken, PA 19428  
[www.colliers.com/philadelphia](http://www.colliers.com/philadelphia)

## The Commons at Renaissance

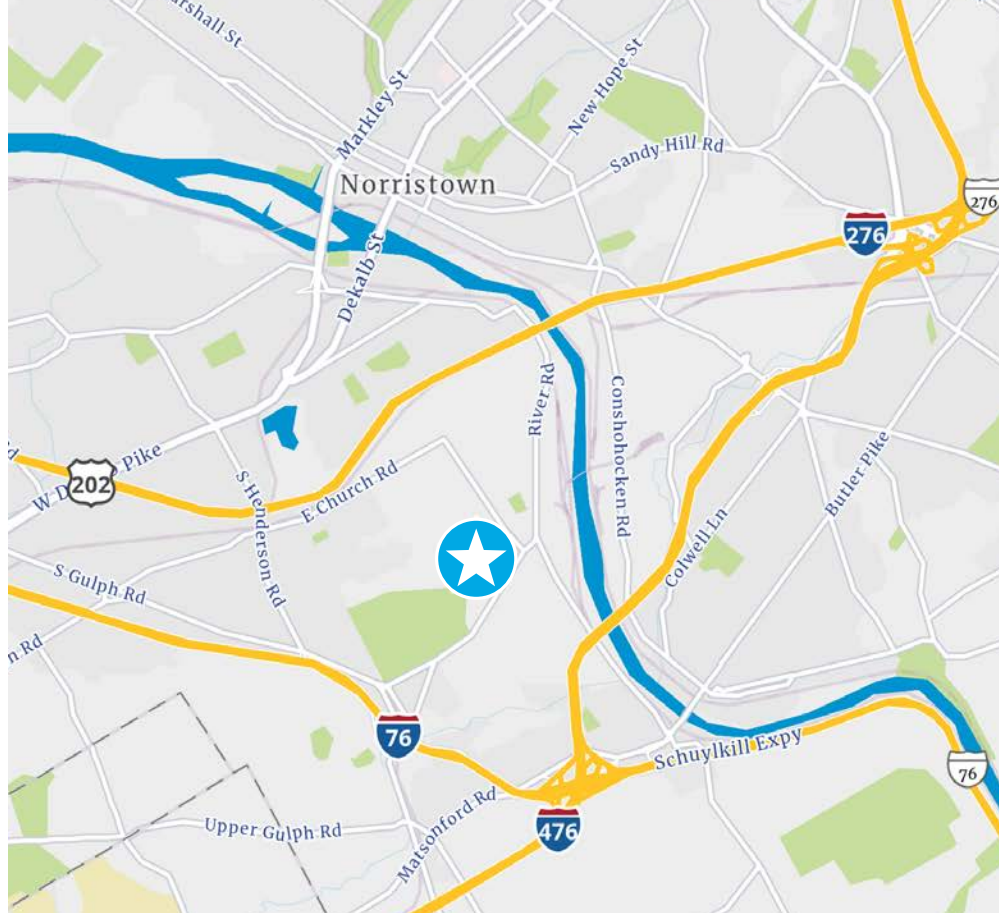
2010 Renaissance Blvd, King of Prussia, PA

- Single story building with multiple points of entry
- Parking surrounds the building
- Efficient space layouts with private restrooms and kitchens
- Can be divided into two tenants

Copyright © 2021 Colliers International. Information herein has been obtained from sources deemed reliable, however its accuracy cannot be guaranteed. The user is required to conduct their own due diligence and verification.

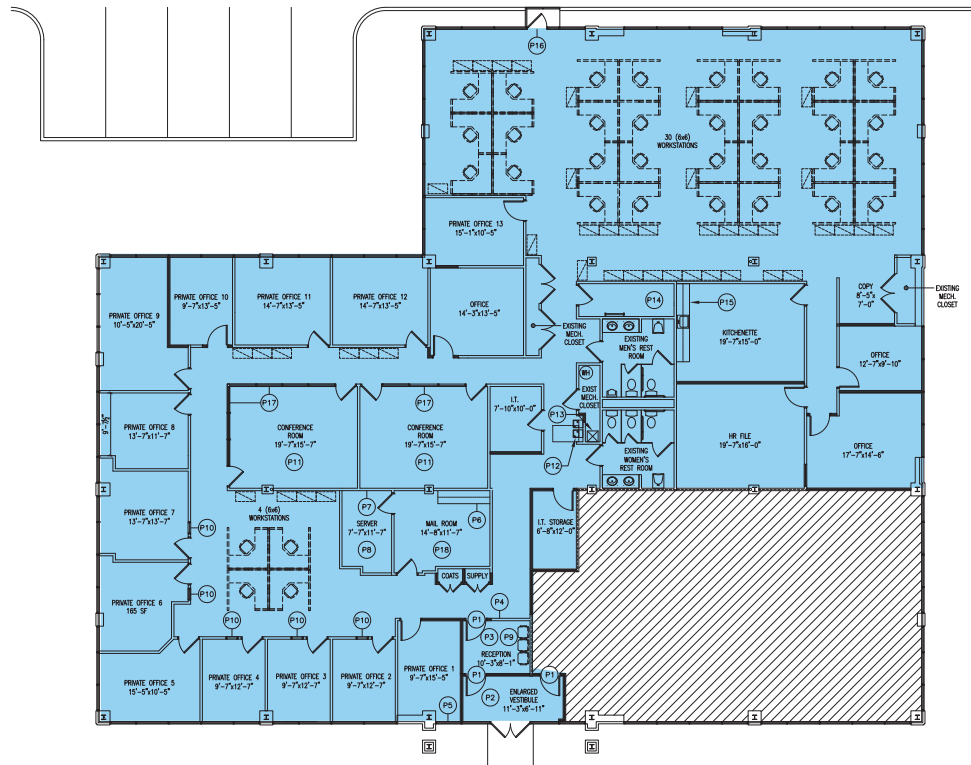
# Location

- Situated just off Route 320, two minutes from the Gulph Mills Interchange of I-76
- Only minutes from I-476, Route 23 and the Valley Forge entrance to the PA Turnpike
- Within 5 minutes of Radnor, Conshohocken, and Route 202 Corridor
- 25 minutes west of Center City Philadelphia and the Philadelphia International Airport



## Floor Plan

9,804 SF Available



### John Susanin

Senior Managing Director  
+1 610 684 1860  
john.susanin@colliers.com

### Kyle Hilbert

Vice President  
+1 610 615 1836  
kyle.hilbert@colliers.com

### Colliers

161 Washington Street, Suite 1090  
Conshohocken, PA 19428  
www.colliers.com/philadelphia

