



Unique Single-Tenant Opportunity

For More Information,
Please Contact:

John Susanin

Senior Managing Director
+1 610 684 1860
john.susanin@colliers.com

Kyle Hilbert

Vice President
+1 610 615 1836
kyle.hilbert@colliers.com

The Commons at Renaissance

2012 Renaissance Blvd, King of Prussia, PA

- Full 28,725 sq. ft. two-story building available
- Cost effective & flexible terms
- Strategically located with easy access to King of Prussia and Conshohocken
- Amenities abound - Conshohocken is three minutes drive
- Strong ownership, professional on-site management

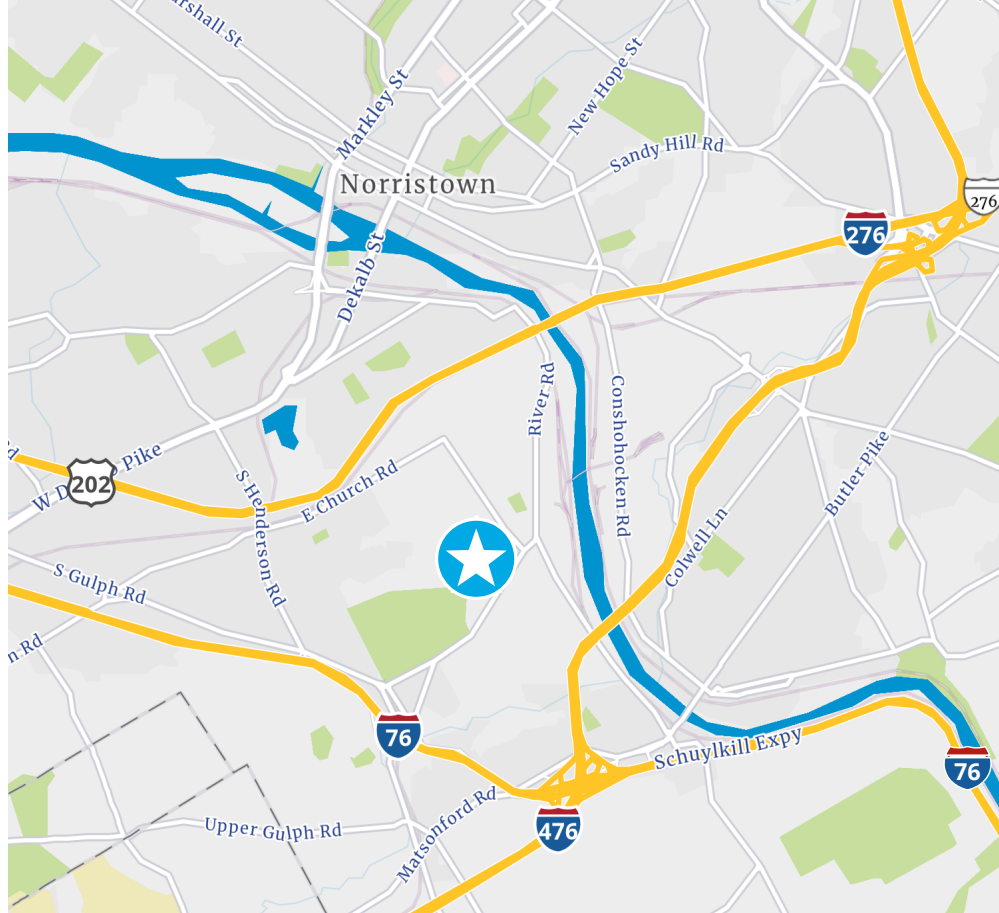
Colliers

161 Washington Street, Suite 1090
Conshohocken, PA 19428
colliers.com/philadelphia

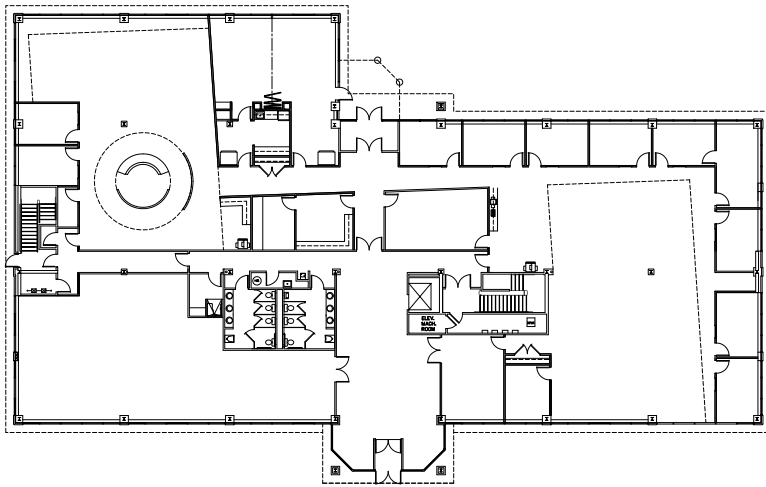
Copyright © 2022 Colliers International. Information herein has been obtained from sources deemed reliable, however its accuracy cannot be guaranteed. The user is required to conduct their own due diligence and verification.

Location

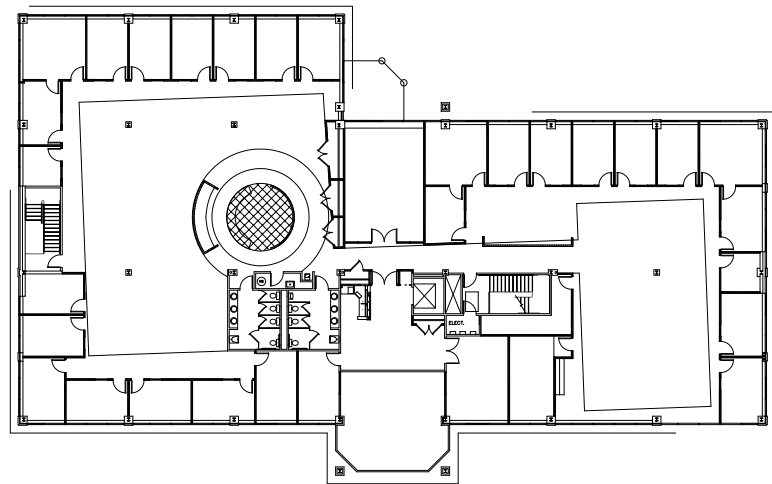
- Situated just off Route 320, two minutes from the Gulph Mills Interchange of I-76
- Only minutes from I-476, Route 23 and the Valley Forge entrance to the PA Turnpike
- Within 5 minutes of Radnor, Conshohocken, and Route 202 Corridor
- 25 minutes west of Center City Philadelphia and the Philadelphia International Airport



First Floor



Second Floor



John Susanin

Senior Managing Director
+1 610 684 1860
john.susanin@colliers.com

Kyle Hilbert

Vice President
+1 610 615 1836
kyle.hilbert@colliers.com

Colliers

161 Washington Street, Suite 1090
Conshohocken, PA 19428
www.colliers.com/philadelphia

