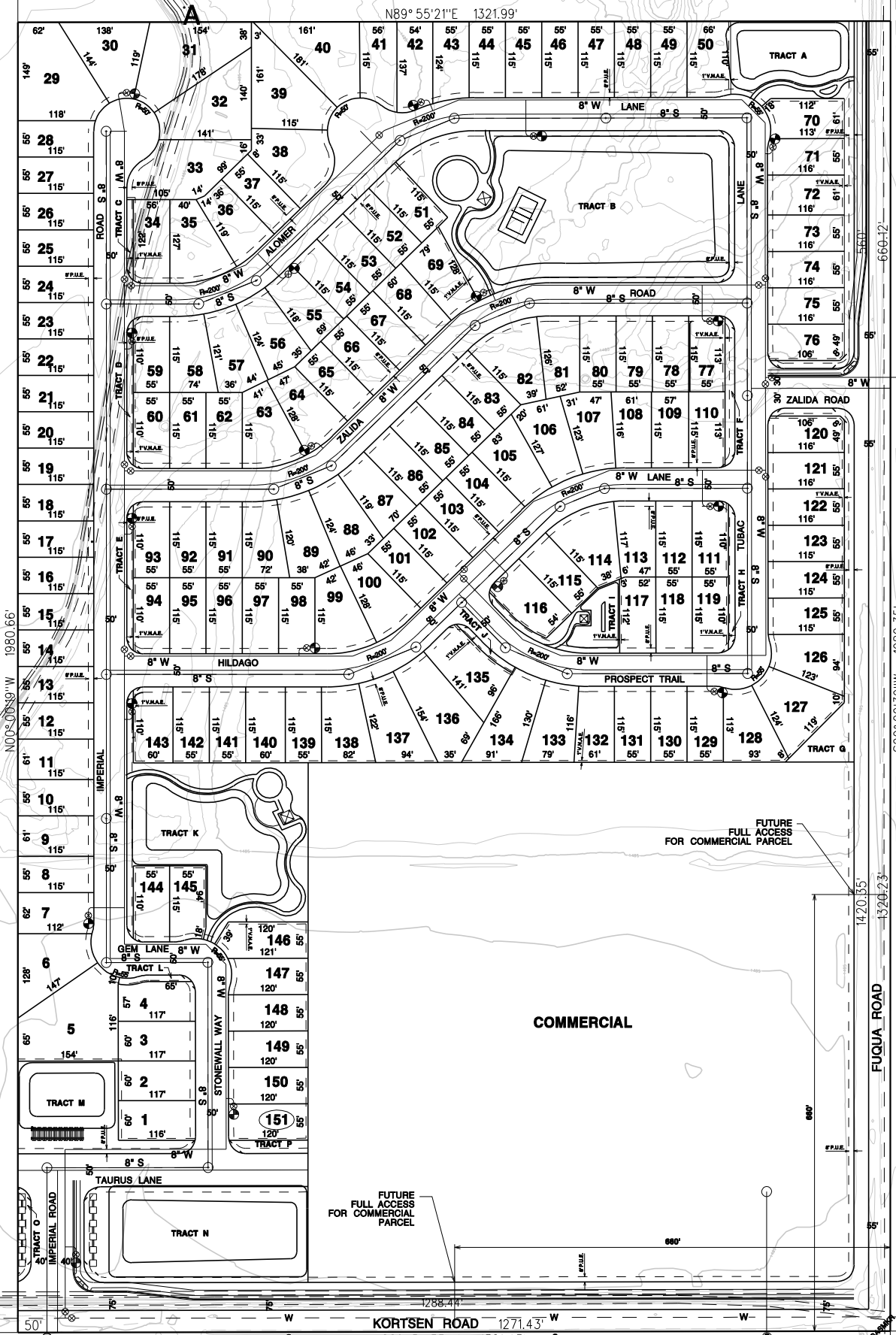


PINAL COUNTY LAND
501-21-002

STATE OF ARIZONA }
COUNTY OF PINAL } SS
I hereby certify that the within instrument is filed
in the official records of this County in Cabinet
Slide _____
Date: _____
Request of: _____
Witness my hand and official seal.
LAURA DEAN-LYTLE, Pinal County Recorder
By: _____ Deputy

COUNTY SEAL



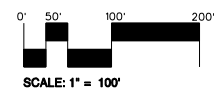
STANFIELD RANCH MPC
501-21-001 F

GENERAL RURAL
503-01-004 D

COMMERCIAL

GENERAL RURAL
503-09-002 F

- LEGEND:**
- EXISTING WATER ——— W ———
 - EXISTING SEWER ——— S ———
 - PROPOSED WATER ——— W ———
 - PROPOSED SEWER ——— S ———
 - PROPOSED VALVE ——— (V) ———
 - PROPOSED MANHOLE ——— (M) ———
 - PROPOSED CLEANOUT ——— (C) ———
 - FIRE HYDRANT ——— (H) ———
 - SURFACE DRAINAGE ——— (D) ———



CVL
COE & VAN LOO CONSULTANTS, INC.

STANFIELD 60

CVL#: 1.01.0107401
SHEET 3 OF 3

DATE: 04/17/08

Received
17 APR 2008
15:48:00
n:\01\0107401\lead\sp100m03.dgn

STANFIELD RANCH MPC
501-22-001 C