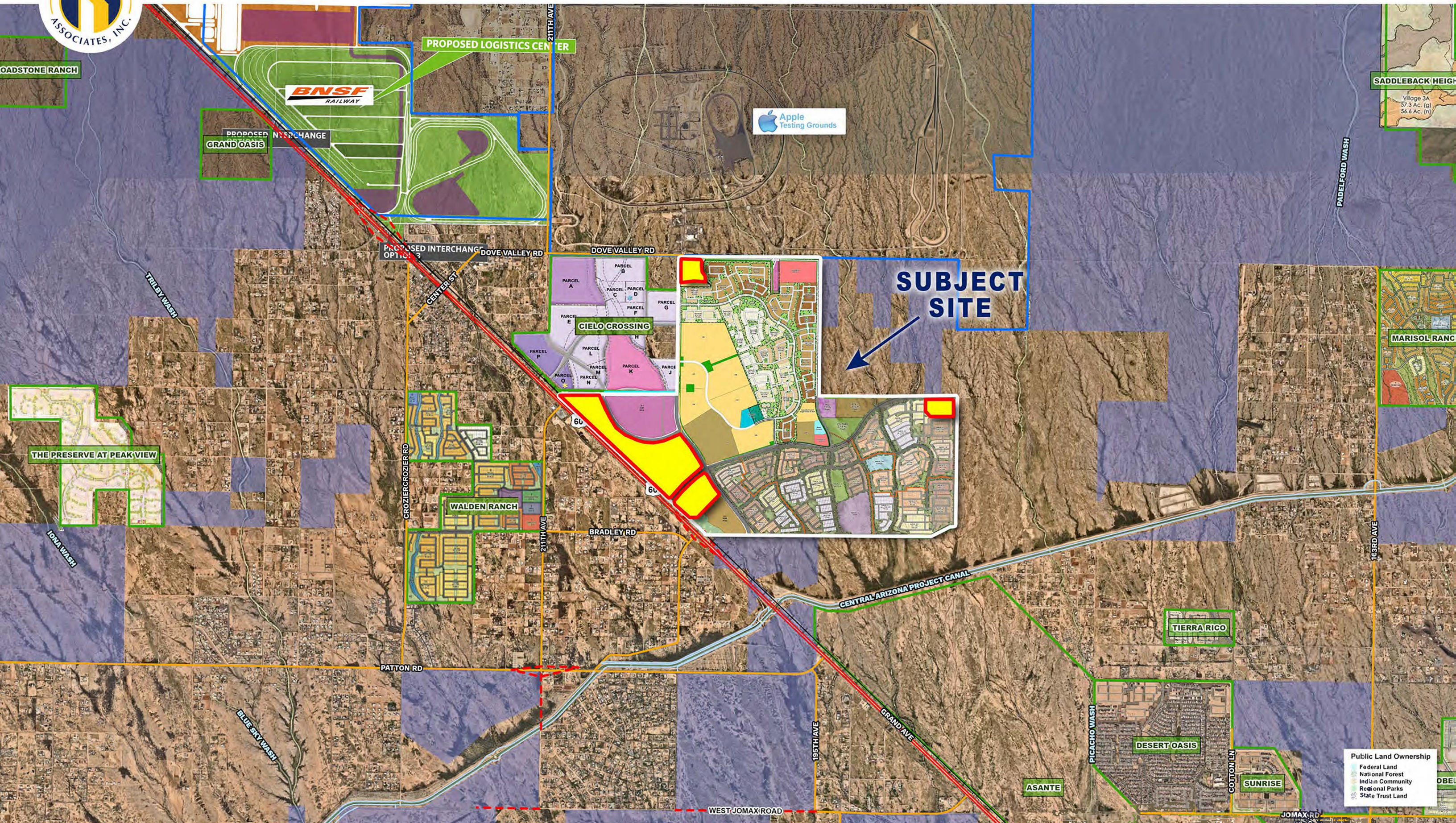


SUBJECT SITE

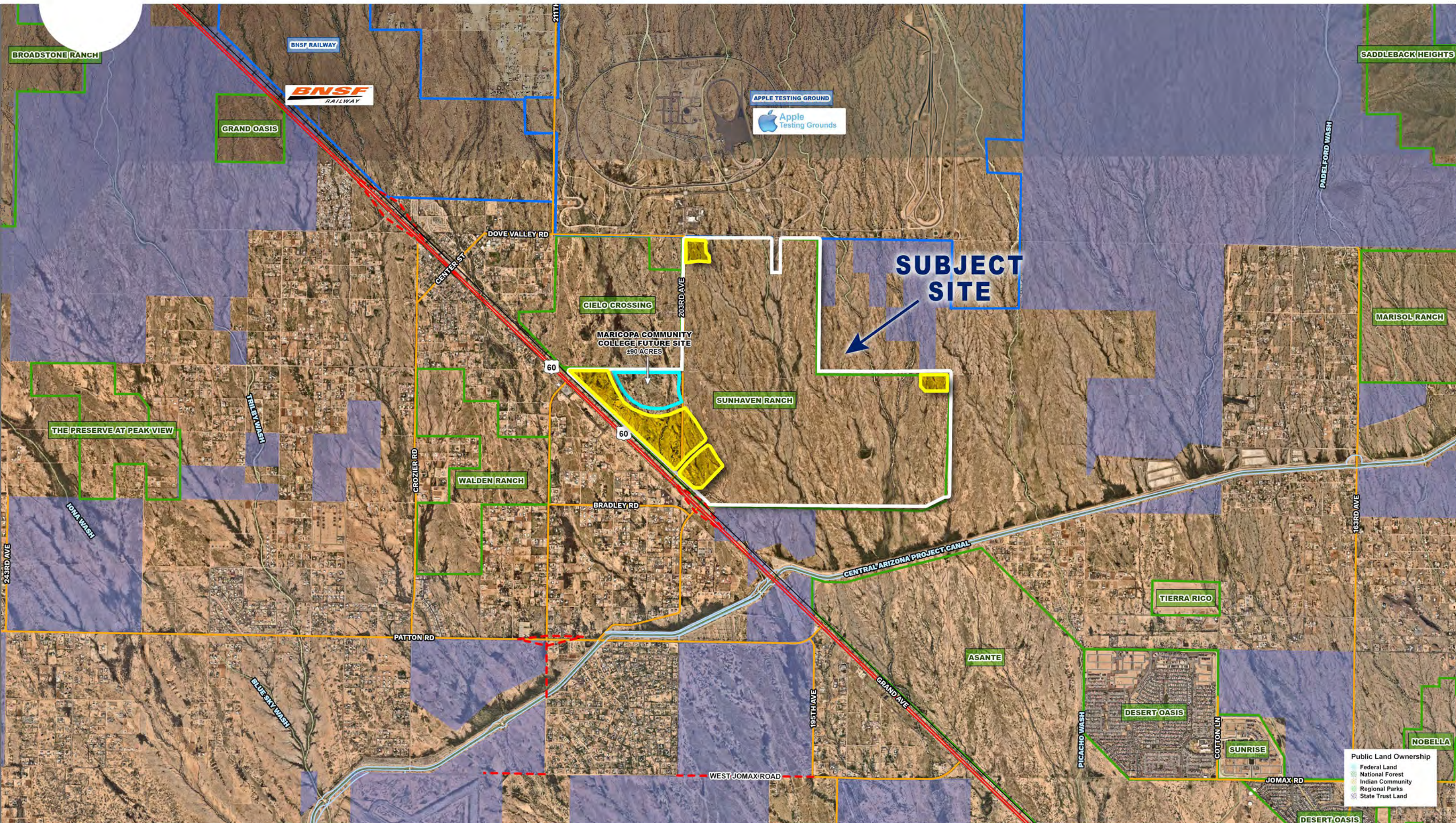


Public Land Ownership

- Federal Land
- National Forest
- Indian Community
- Regional Parks
- State Trust Land



Public Land Ownership
Federal Land
National Forest
Indian Community
Regional Parks
State Trust Land



LOOP 303 EMPLOYMENT CORRIDOR

Approximately 5,000 jobs have been created along the Loop 303 corridor in the past 36 months with 21,000 more jobs expected within the next 5 years. This has spiked housing demand to record levels in the West Valley. This map outlines West Valley Employment as well as shows that beyond White Tank Regional Park and surrounding state and federal land.

- Retail and Entertainment**
 1. Barnes & Noble
 2. Best Buy
 3. Burlington
 4. C-A-L Ranch
 5. Cost Plus World Market
 6. Fry's Marketplace (231 Employees)
 7. Harkins Theatres
 8. Home Goods / TJ Maxx
 9. JC Penny
 10. Life Time
 11. Lowe's
 12. Michaels
 13. Pier 1 Imports
 14. Pottery Barn Outlet
 15. Ross
 16. Safeway
 17. Target & Super Target
 18. Total Wine
 19. Ulta
 20. Walmart Supercenter & Marketplace (260 Employees)

- Medical and Healthcare**
 1. Abrazo West Campus (1,726 Employees)
 2. Arizona Cardiology Group
 3. Banner Health (6,683 Employees)
 4. Cancer Treatment Centers of America (768 Employees)
 5. Dignity Health (700 Employees)
 6. Fresenius Kidney Care
 7. Goodyear Eye Specialists
 8. Integrated Medical Services (989 Employees)
 9. Mountain Park Health Center
 10. Palm Valley Rehabilitation (225 Employees)
 11. SimonMed Imaging (650 Employees)
 12. Spooner Physical Therapy

- Office**
 1. Canyon Trails Professional Center
 2. Indian Palms Professional Plaza
 3. Palm Place Plaza
 4. Palm Valley Office Park I, II & III
 5. Palm Valley Professional Plaza

- Manufacturing and Industrial**
 1. AZZ Galvanizing (100 Employees)
 2. Ball Corp. (120 Employees)
 3. Cavco Industries (325 Employees)
 4. CornellCookson (265 Employees)
 5. Global Organics (63 Employees)
 6. Huhtamaki (330 Employees)
 7. KPS Global (130 Employees)
 8. Lorts Manufacturing (175 Employees)
 9. Inventure Foods / Poore Brothers (250 Employees)
 10. Schoeller Allibert (65 Employees)
 11. Snyder's of Hanover (215 Employees)
 12. Sub-Zero Inc. (590 Employees)
 13. Gorbel (75 Employees)
 14. Quetico (300 Employees)
 15. HD Supply
 16. Andersen Corporation (415 Employees)
 17. Amazon Robotics Facility (1,000 Employees)

- SPEC Buildings**
 1. First Industrial at PV303 (40,000 SF to 2M SF)
 2. OPUS Goodyear Crossing (540,000 SF)
 3. Elwood Logistics (1.3 Million SF)

- Aerospace and Aviation**
 1. AerSale (273 Employees)
 2. ATCA, a Lufthansa Flight Training Subsidiary
 3. Galaxy International (112 Employees)
 4. Lockheed Martin (750 Employees)
 5. LuxAir Jet Centers
 6. PolyOne
 7. Prime Solutions Group
 8. Sonoran Technology (153 Employees)

- Fulfillment and Distribution**
 1. Amazon.com x2 (4,538 Employees)
 2. Chewy.com (700 Employees)
 3. Dick's Sporting Goods (259 Employees)
 4. Macy's/Bloomingdale's (1,008 Employees)
 5. McLane Sunwest (345 Employees)
 6. Michael Lewis Company (120 Employees)
 7. REI (312 Employees)
 8. Simpson Norton Corporation (61 Employees)
 9. UPS (1,852 Employees)
 10. Red Bull (140 Employees)
 11. Rauch Fruit Juices (140 Employees)
 12. White Claw (250 Employees)
 13. FedEx (1,308 Employees)
 14. Blue Buffalo

- Data Centers**
 1. Compass Datacenters
 2. Stream Data Centers
 3. Vantage Data Centers
 4. Microsoft Data Centers

Map Legend

